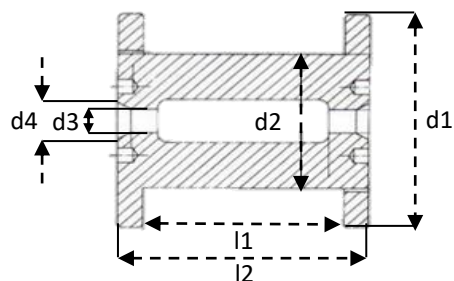


## REELS

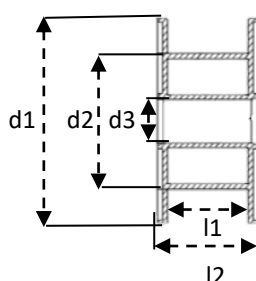
Type	Ø outer flange D1 mm	Ø drum D2 mm	Ø arbor hole D3 mm	Ø chamfer D4 mm	Traverse length L1 Mm	Overall length L2 Mm	Tare g	CAPACITY (max)	
								Single wire kg	Strand/Rope kg
Din 63	63	40	11	15	49	63	40	0,4	-
HK 76	63	44	16	-	76	86	71	0,4	-
HK 76/45 (biconical)	63	45	16	24	60	86	70	0,4	-
WW 16C	67	34	16	28	72	82	72	0,8	-
WW 24C	67	34	16	28	107	117	92	1,2	-
Spirka 75 long	75	25	10	-	70	100	105	-	-
Spirka 75 short	75	25	10	-	50	100	95	-	-
DIN 80	80	50	16	24	64	80	125	1	-
Din 100	100	63	16	24	80	100	125	2	-
Din 125	125	80	16	24	100	125	200	4	-
Din 125/45 (biconical)	125	80	16	24	100	125	200	4	-
HKV 125/45 (biconical)	125	71	16	-	65	125	160	2-3	-
Din 160	160	100	22	34	128	160	350	9	8
HKV 160/45 (biconical)	160	90	16-22	-	85	160	315	-	-
Din 200/22	200	125	22	34	160	200	600	16	14
Din 250/22	250	160	22	44	160	200	1050	25	22
Din 250/36	250	160	36	44	160	200	1050	25	22
Din 250/127	250	160	127	44	160	200	1050	25	22
Din 355	355	224	36	60	160	200	1850	45	40
VM 400/36	400	250	36	-	250	290	2180	80	75
VM 400/127	400	250	127	-	250	290	2180	80	75
DIN 500/36	500	315	36	-	280	350	-	-	-
DIN 500/127	500	315	127	-	180	250	-	-	-
GMV 500/36	500	250	36	-	255	310	9525	160	160
GMV 500/127	500	250	127	-	255	310	8845	160	160
VM 560/127	560	355	127	-	228	355	14700	220	220
TF 560 DP	560	280	127	-	280	320	48600	-	-
VM 610/127	610	315	127	-	350	400	12250	250	250
TF 630 DP	630	315	127	-	315	375	62500	350	350

FSP-one also delivers on other kind of spools. Even on yours. Contact us for more information.

CYLINDRICAL SPOOL FOR SINGLE WIRES



CYLINDRICAL SPOOL FOR STRANDS AND ROPES



BICONICAL SPOOL FOR SINGLE WIRES AND MULTI-WIRES

